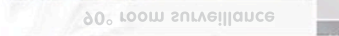
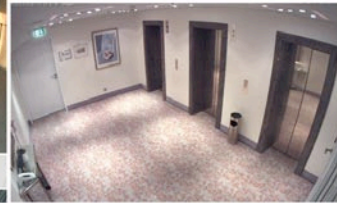


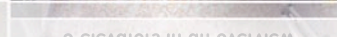
90° room surveillance



90° room surveillance



3 elevators in an overview



3 elevators in an overview

Fits In. Watches Out.

Inconspicuous surveillance with state-of-the-art technology. The D24 FixDome from MOBOTIX adapts perfectly to any task. Exchangeable lenses, various mounting and configuration options including vandalism set support unlimited application possibilities.



HiRes Video

MOBOTIX HiRes video replaces up to 6 cameras ...

- Attractively designed FixDome camera featuring exchangeable lenses from Tele to Wide Angle
- Numerous installation options both indoor and outdoor
- On-wall set with space for extension modules (battery, UMTS, WLAN, etc.)
- Integrated DVR with HiRes video recording (4 GB MicroSD card incl.)
- Robust, low-maintenance and weatherproof from -30° to +60°C (-22° to +140°F), (IP65)
- Digital continuous zoom, pan and tilt
- Can be upgraded to an intercom system with the MOBOTIX ExtIO module

... starting at 448 €* incl. video management software

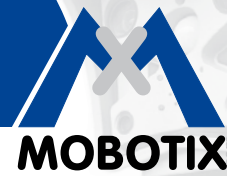
*MSRP (Manufacturer's suggested retail prices) • Prices ex-works Langmeil, Germany (EXW) • Excluding VAT and any other handling charges • Information subject to change without notice! • © MOBOTIX AG

HiRes Video Innovations

The German company MOBOTIX AG is known as the leading pioneer in network camera technology and its decentralized concept has made high-resolution video systems cost efficient.

MOBOTIX AG • D-67722 Langmeil • Tel: +49-6302-9816-103 • Fax: +49-6302-9816-190 • sales@mobotix.com

Technical Specifications D24



The HiRes Video Company

| Technical Specifications D24 MonoDome | |
|--|---|
| Models | Basic, IT, IT-Night, Sec, Sec-Night |
| Lenses | 22 to 135 mm format, horizontal angle 90° to 15° |
| Sensitivity | Color: 1 lux (t=1/60 s), 0,05 lux (t=1/1 s) B/W: 0,1 lux (t=1/60 s), 0,005 lux (t=1/1 s) |
| Sensor | 1/2" CMOS, progressive scan |
| Max. image resolution | Color: 2048 x 1536 (3MEGA), B/W: 1280 x 960 (Mega) |
| Image format | 2048 x 1536, 1280 x 960, 1024 x 768, 800 x 600, 768 x 576 (D1), 704 x 576 (TV-PAL), 640 x 480, 384 x 288, 352 x 288, 320 x 240, 160 x 120; free image format selection (e.g. 1000 x 200 for skyline) |
| Max frame rate (M-JPEG) (Live/Recording) | VGA: 25 fps, TV-PAL: 18 fps, MEGA: 8 fps, 3MEGA: 4 fps |
| Video stream (MxPEG) (Live/Recording/Audio) | VGA: 30 fps, TV-PAL: 30 fps, Mega: 30 fps, 3MEGA: 20 fps |
| Image compression | MxPEG, M-JPEG, JPG, H.263 (Video-VoIP-Telephony) |
| Internal DVR | MicroSD slot (camera-internal video recording up to 32GB) |
| External storage | Directly on NAS and PC/Server without additional recording software |
| Software (inclusive) | Video management software MxEasy, Control room software MxControlCenter 2.0 |
| Image processing | Backlight compensation, automatic white balance, image distortion correction, video sensor (motion detection) |
| Virtual PTZ | Digital Pan/Tilt/Zoom, continuous 8x zoom |
| Alarm/Events | Triggering of events by integrated multiple-window motion detection, external signal, temperature sensor, notification over email, FTP, IP-Telephony (VoIP, SIP), visual/acoustic alarm, Pre- and post-alarm images |
| Audio | Optional via ExtIO, lip-synchronous audio, two-way speaker, audio recording, video VoIP supported |
| Interfaces | Ethernet 10/100, USB |
| Video phone | VoIP, SIP, two-way speaker, remote control via DTMF signaling, event notification |
| Security | User-/Group management, HTTPS/SSL, IP address filter, IEEE 802.1x, intrusion detection, digital image signature |
| Certificates | BGV C 9; EMC: DIN EN 61000, DIN EN 50155 (shock, vibration, temperature), FCC part 15B; CE |
| Power supply | Power over Ethernet (IEEE 802.3af): PoE class variable depending on operating mode; power consumption: typ. 3 W; with PoE switch/MOBOTIX PoE adapter |
| Operating conditions | IP65 (DIN EN 60529), -30° to +60 °C (-22°F to +140°F) |
| Dimensions | Ø x H: 16 x 8,6 cm, Weight: ca. 350 g |
| Standard delivery | Housing (high-resistance composites - PBT-PC), white, shockproof polycarbonate dome (transparent), free choice of lenses, mounting parts, allen wrench, patch cable, manual, software, 4 GB MicroSD |

Technical information subject to change without notice.

| Available Accessories D24 MonoDome | | | | | |
|---|--|--|---|--|--|
| <p>In-Ceiling Set MX-OPT-IC</p>  <ul style="list-style-type: none"> Consists of in-ceiling mount and mounting parts Easy mounting from front Ø 150 mm installation dimension It can be ordered with stainless steel cover | <p>On-Wall Set MX-OPT-AP</p>  <ul style="list-style-type: none"> Consists of On-Wall mount and mounting parts Protects the cabling 165 mm x 37 mm | <p>Vandalism Set MX-D24M-Vandal-ESMA</p>  <ul style="list-style-type: none"> Reinforced dome (3 mm Polyc.) Stainless steel vandalism housing polished or matt, in white, silvergray or black | <p>Outdoor Wall Mount MX-OPT-WH</p>  <ul style="list-style-type: none"> Weatherproof (IP65) Covers RJ45 wall outlets Space for expansion modules (WLAN) | <p>Pole Mount MX-OPT-MH</p>  <ul style="list-style-type: none"> 3 mm stainless steel, white 2 stainless steel straps for pole diameter 60-180 mm, incl. mounting parts | <p>ExtIO Extension Module MX-ExtIO</p>  <ul style="list-style-type: none"> Microphone/speaker PIR sensor for motion detection, temperature sensor Integrated switch functions |

| | L22 Super Wide Angle 90° | L32 Wide Angle 60° | L43 Wide Angle 45° | L65 Tele 31° | L135 Tele 15° |
|--------|---|---|---|--|---|
| Lenses |  |  |  |  |  |
| | approx. 90°H x 67°V at 10 m appr: 20.0 x 13.3 m | approx. 60°H x 45°V at 10 m appr: 11.5 x 8.2 m | approx. 45°H x 34°V at 10 m appr: 8.2 x 6.1 m | approx. 31°H x 23°V at 10 m appr: 5.5 x 4.0 m | approx. 15°H x 11°V at 10 m appr: 2.6 x 1.9 m |

HiRes Video Innovations

The German company MOBOTIX AG is known as the leading pioneer in network camera technology and its decentralized concept has made high-resolution video systems cost efficient.

MOBOTIX AG • D-67722 Langmeil • Tel: +49-6302-9816-103 • Fax: +49-6302-9816-190 • sales@mobotix.com