

# *LuxRIOT*

A&H SOFTWARE HOUSE, INC

## **Quick Start Guide**

---



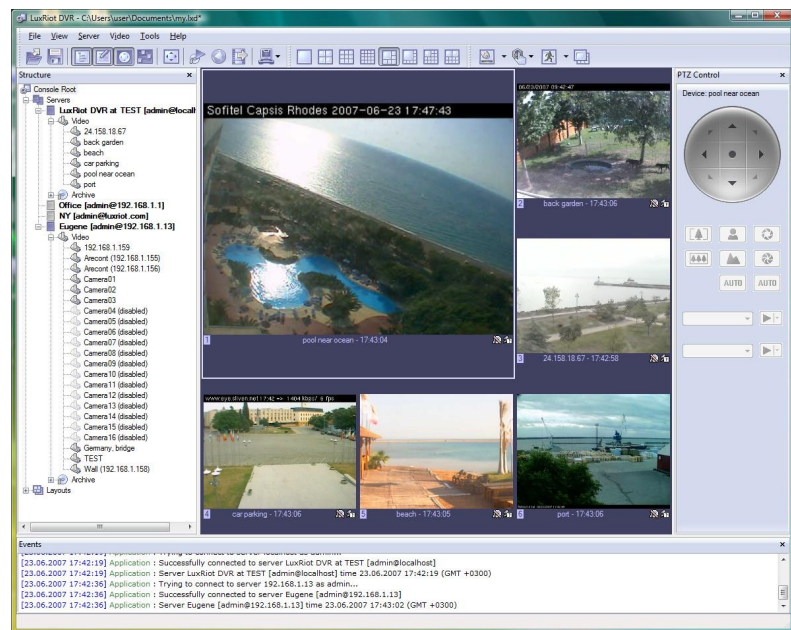
**Volume**

**1**

# LuxRiot

by a&h software house, inc

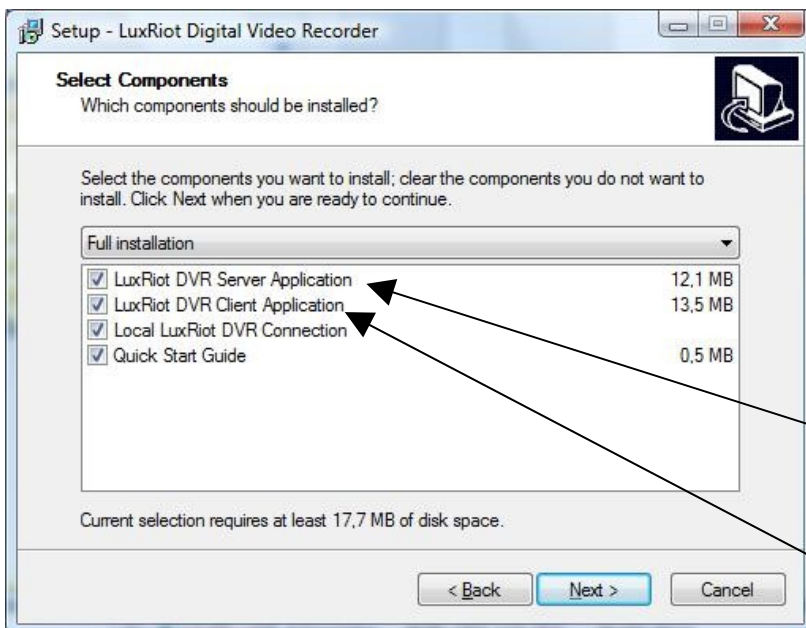
## Professional Digital Video Recording and Surveillance Solution



# Quick Start Guide

(888) LUX-RIOT <http://www.LuxRiot.com>

### ICON KEY



### LuxRiot:

The LuxRiot DVR package consists of (2) **two** applications:

### The DVR Server and the DVR Client.

- The **DVR Server** is a behind-the-scene application that captures, processes and records video and then serves it to local or remote DVR Client software.

• The **DVR Client** is the application that shows live and recorded video streams from a single DVR Server or multiple DVR Servers; it also allows users to configure and control DVR Server(s).

## Installation, Activation and Initial Setup

**Note:** There is only one installation package for both the DVR Server and the DVR Client. During the installation process you will be presented with a choice to install either both of the available applications or just one of them.

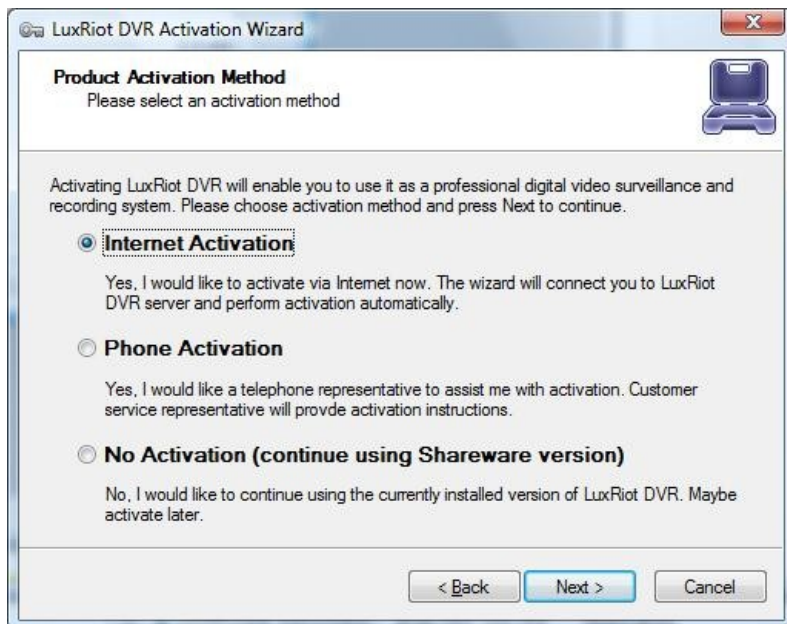
---

---

**ICON KEY**

---

---



The DVR Server requires activation with the Activation Key provided to you when you purchased the product. The DVR Server can only be activated on one computer. Once the activation Key has been used; it will no longer be valid and unable to activate DVR Server on any other computer. However, you can skip the activation process if you would like to try our product first. The DVR Client software does **NOT** require activation and can be installed on as many computers as you wish.

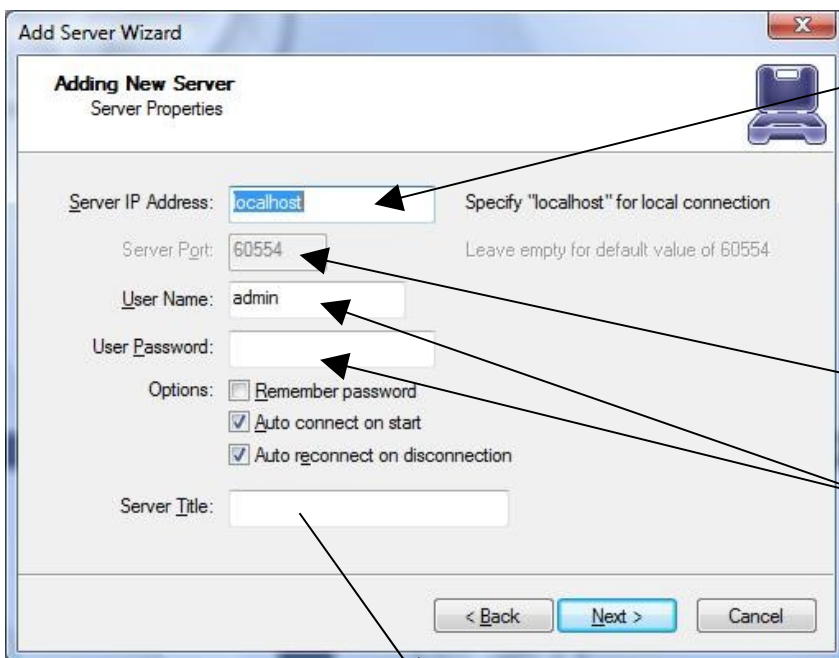
The DVR Server Setup Wizard will walk you through all steps in order to help you setup your DVR Server. It will help you with tasks such as: enter unique server name, administrator login setup, enable access from remote DVR Clients and TCP/IP port selection, application running mode. You can always come back to this Wizard later to change your settings though the Windows Start button.

**Note:** The DVR Server could run as a **Windows Service** (this means the software will be fully operational even if nobody has logged into Windows) or as an **Application**. However, if you are evaluating this product, this option will not be available to you.

# Adding a Server

**Note:** When you start the DVR Client for the first time the Add Server Wizard will automatically open.

**ICON KEY**



**Server:**

**SERVER:** To add a server you will need to know the servers's IP address. If you are running the DVR Client on the same system as the DVR Server put *localhost* as the IP.

**IP Port:** if you leave this blank, the default port 60554 will be used.

**User and Password:** Enter a user name and password. Later you can add, remove or modify the server connection information from the Server menu.

The name you want to give to your server.

**Note:** The Server connection information can be saved into the DVR Client file (.lxd) through the File menu. These files could be used to group servers, to share connections with others, etc.

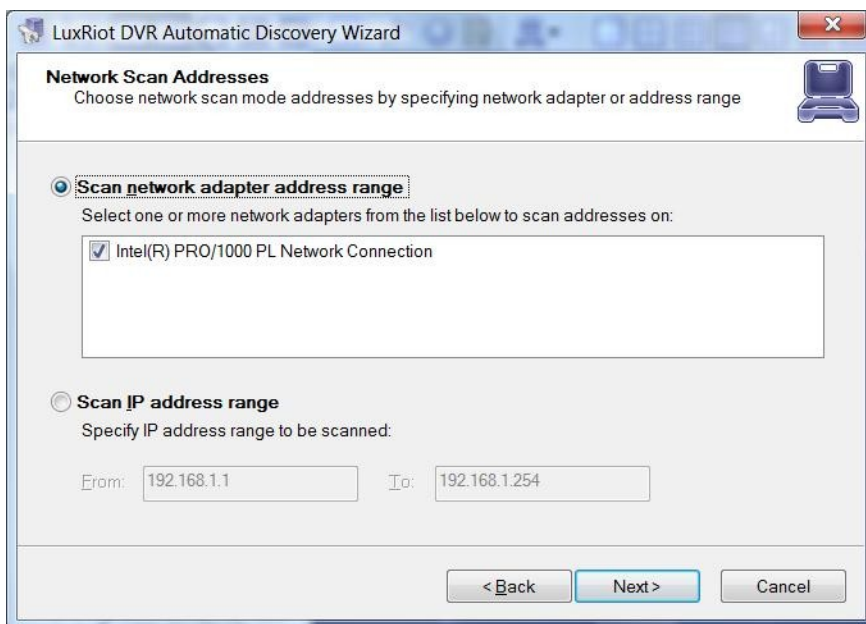
## Adding Cameras to The Server.

**Note:** If you have installed any LuxRiot supported multi channel video grabber (a.k.a Frame Grabber) or any Direct Show compatible device on the computer with the DVR Server, than those cameras will automatically appear on the Structure Pane under **Server->Video**. However, you will need to go through the Camera Setup Wizard anyway to initially configure those cameras. You may start this operation from: **Server->Selected Server->Task->Camera Setup Wizard**.

---

### ICON KEY

---



### Network Devices:

There are two ways to add Network (IP) cameras or video servers: you can run the **LuxRiot DVR Automatic Discovery Wizard** (you can start it from **Server->Selected Server->Task->Automatically discover network video devices**), which will help you to find and add them to a DVR Server or You can add them **manually** from the **Camera Setup Wizard**.

**Remember that each Network Camera and Server has to be configured to your network settings using the manufacturer's software prior to adding it to a LuxRiot DVR Server.**

## Configuring Cameras

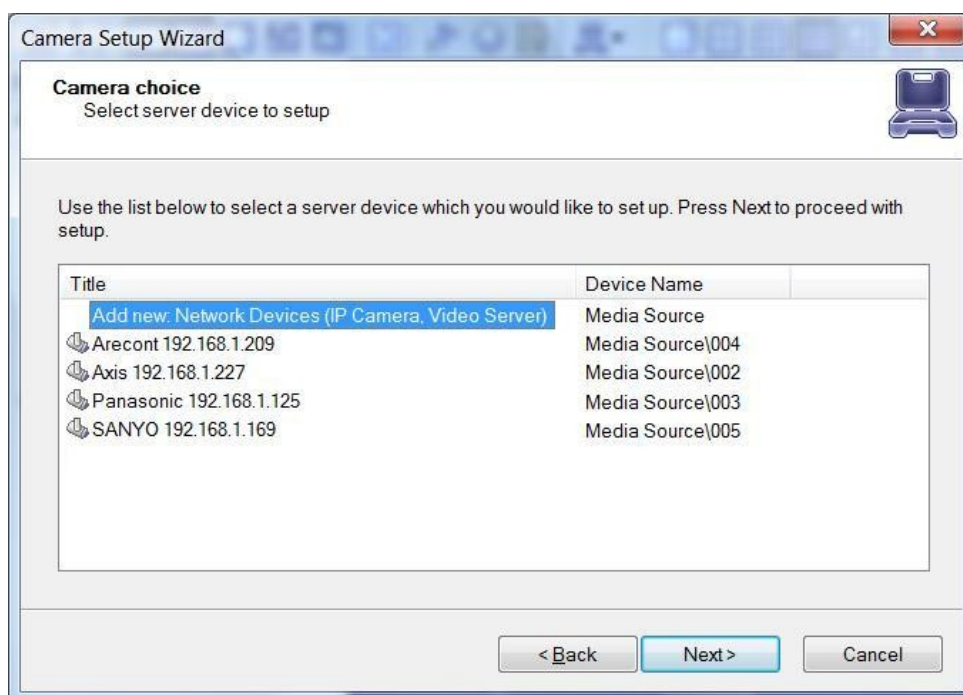
---

---

### ICON KEY

---

---



### Cameras:

Each camera has to be configured via the **Camera Setup Wizard** in order to record video from this camera and to analyze video stream for motion detection.

The **Camera Setup Wizard** will help you assign names for each camera, adjust the cameras properties (like frame size, etc), select the compression type (it is recommended to always select Enable Server Side Compression if available), setup motion detector and recording settings.

## Viewing Live Video

**Note:** You can select any screen arrangement from the menu **View->Screen Arrangement**. However, the most useful configurations are preconfigured and available on the toolbar. To select a video stream into a particular window right click on that window. The Video Stream submenu will open and it will have all available video streams from all currently connected servers to choose from (In order to have a selection in this menu, you must have previously added Servers). Dragging and dropping cameras from the Structure Pane or from any another window into a preferred window of your choice, will also change the selected video stream in that window.

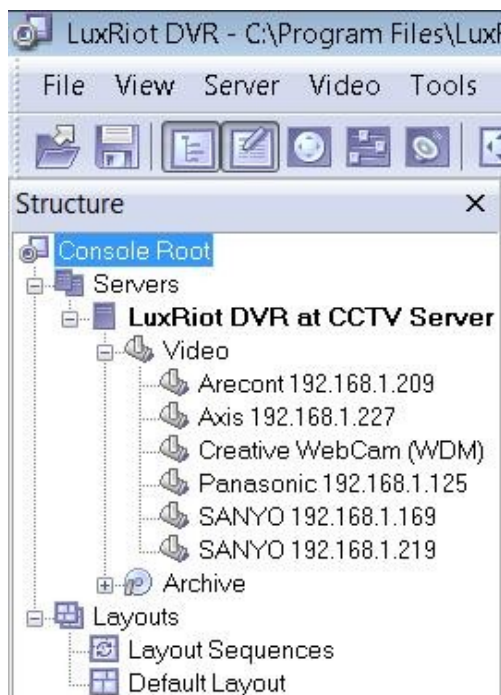
---



---

### ICON KEY

---



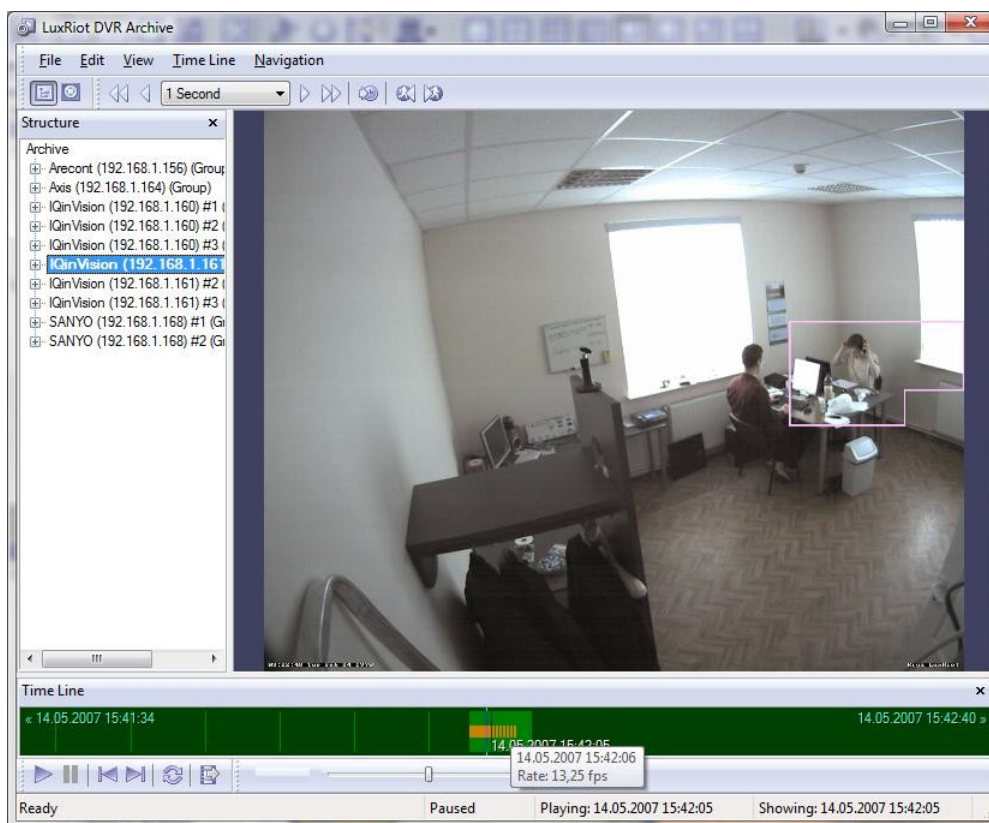
### Layouts:

Any screen arrangement and video stream selections could be saved into the **layout** by selecting **View->Save Current Layout**. Later you can activate, delete, and set up start-up layouts from the **View->Manage Layouts** menu.

Frame rates and video quality will depend on the video capturing device, the available network bandwidth between the client and the server, number of cameras, selected frame sizes, and the compression quality.

# Play Back

**Note:** Playback is accessible only if you have something recorded on the server.



## Play back:

To playback recorded video streams select from the menu **Server->Selected Server->Tasks->Open Archive**.

You can select a stream in the Structure pane. All of the video navigation controls are available from the menu Navigation in addition to the Playback control buttons and the Jog Dial style controls at the bottom of the window.