

Control Center

An enterprise IP security solution with the power to manage video, audio and alarms over IP networks



IndigoVision

Complete IP Video Security Solutions

www.indigovision.com

Key Benefits

IndigoVision's distributed architecture means site configuration information changed by an administrator is automatically shared to all operators. This removes any single point of failure and gives a highly scalable security management system that can span cities, countries and even continents.

Guaranteed backwards and future compatibility giving peace of mind in security investment.

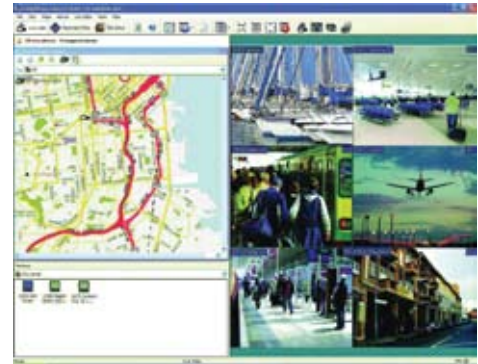
Licence free enterprise software allows Control Center to be installed as many times as required.

Monitor multiple remote sites at a single location. Industry-leading compression means both live and recorded video can be accessed from any location.

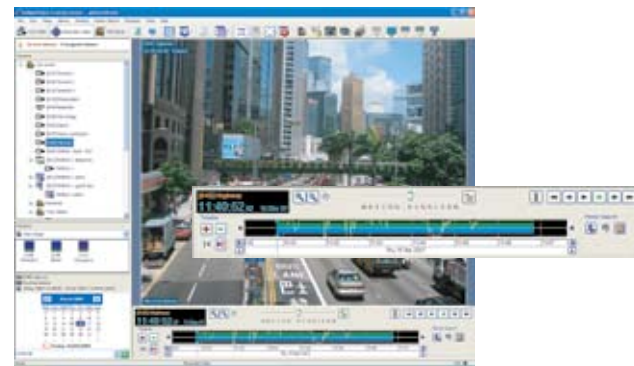
IndigoVision's range of Transmitters & Receivers allow traditional analog CCTV cameras and video monitors to be integrated into an IP network. Control Center allows these cameras to be viewed anywhere on the IP network.

Extremely fast incident review using motion thumbnails.

View



Playback



Analytics



Alarms



Viewing



Control Center allows all users to display live video on 4 separate screens per workstation, on an unlimited number of workstations, with up to 25 video panes per screen.



Salvos, Guard Tours and Sequences

All traditional CCTV features are supported including Salvos, Guard Tours and Sequences. Video can be displayed on PC viewing panes or analog monitors.

Video Lockout

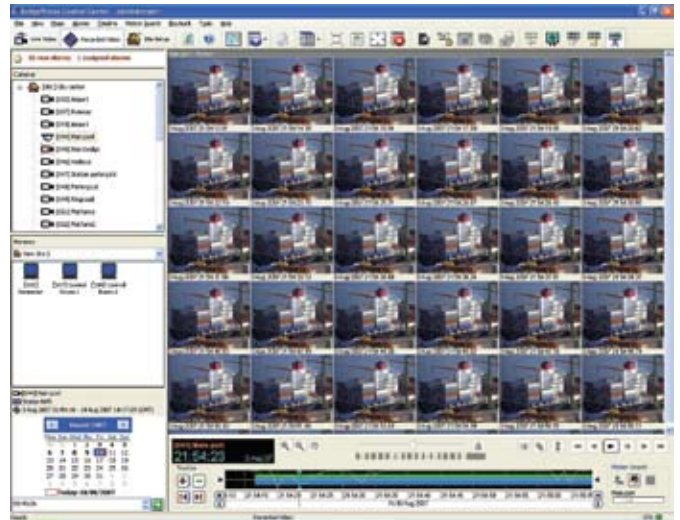
Video lockout allows an authorized user to prevent all other users from viewing live or recorded video from one or more cameras while an incident is taking place.

Hidden Zones

Hidden zones (also known as privacy zones) are particular areas of a scene that are normally hidden for reasons of privacy. Control Center allows administrators to set areas in each camera scene which can be hidden from normal operators but viewed by administrators.

Thumbnails

Thumbnails make searching through large amounts of footage easy and efficient. Motion-based thumbnails allow users to identify an event where the exact time is not known, for example, the theft of a car from a parking lot. Thumbnails display still images taken from recorded video within the current range of the timeline. Thumbnails for 8 hours of footage are displayed in under a second.



Open Architecture PTZ

Control Center's open architecture allows the user to control any analog PTZ camera regardless of manufacturer. In addition, administrators can configure custom commands and presets for each PTZ camera. They can also set a user priority for PTZ cameras, and specify that certain users can hold a connection to a PTZ camera, preventing other users from controlling it. PTZ cameras can be controlled using an external joystick, or directly on the video pane using a mouse.



Maps

Control Center allows users to display an interactive map of a site to help locate and manage cameras and alarms. Using two PC monitors, the full map can be viewed on one screen and the video panes on another.



Analytics

The Control Center Motion Search feature uses Analytics to allow users to search through a recording and identify any significant motion that occurred during it. The user can specify which areas of the scene are to be observed or ignored when searching.

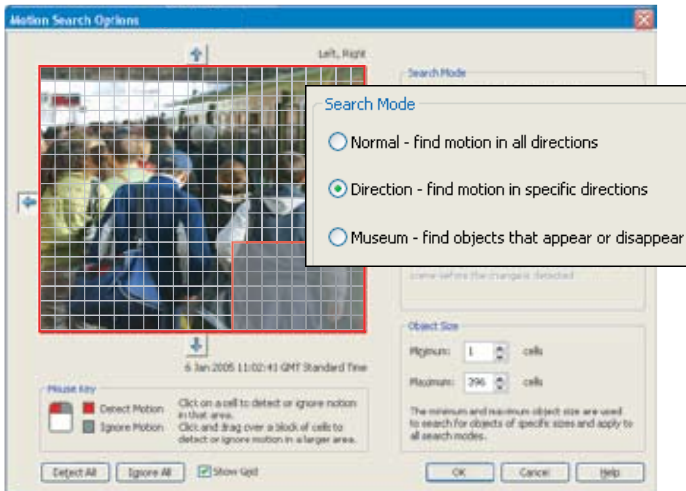
Once Control Center has compiled a motion profile of a recording, users can search through it based on the motion found over the current threshold. This threshold can be changed at any time. Users can zoom in for a more detailed view of the profile, and can also skip directly backwards and forwards through the profile.

Control Center can display bars on the video showing the current values calculated by the activity and analytics filters running on the Transmitter, as well as current alarm thresholds. Alarm counts are shown on the playback timeline, with totals for each time division (alarms per minute, per hour, etc).

Virtual Matrix

To enable use with a CCTV keyboard, Control Center automatically numbers monitors, cameras, salvos, sequences and guard tours. Users can view video on monitors or PC panes in the same way as controlling a matrix. This functionality is supported using PC and CCTV keyboards, providing an efficient and familiar control method to end users.

Any number of users can use the virtual matrix functionality at the same time, giving a very powerful system. Up to 9999 cameras and 9999 monitors can be numbered, making Control Center a 9999 x 9999 virtual matrix.



Recording and Playback

Control Center provides a rich and powerful playback experience for incident review.



Recorded Video

Control Center allows users to display recorded video from up to 16 cameras at the same time. It provides a set of powerful tools for reviewing recordings and quickly identifying vital evidence. The jog/speed shuttle includes frame-based single step forwards and backwards and 16x speed at 240 fps.

Recording Redundancy and Failover

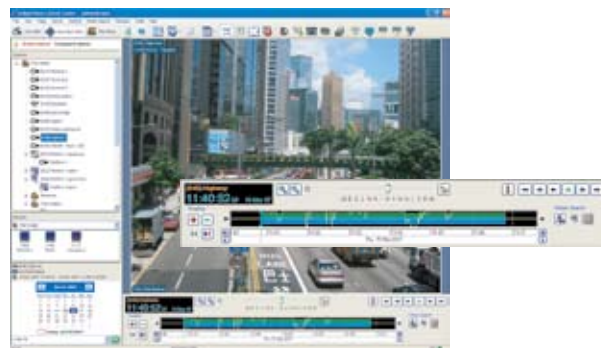
Control Center can manage multiple NVRs in the same system. Operators can access recordings from any location on the IP network. NVRs can be configured to monitor each other providing continuous or failover redundancy.

Synchronized Camera Playback

Playback of multiple recordings can be synchronized so that the same incident can be viewed from multiple cameras simultaneously.

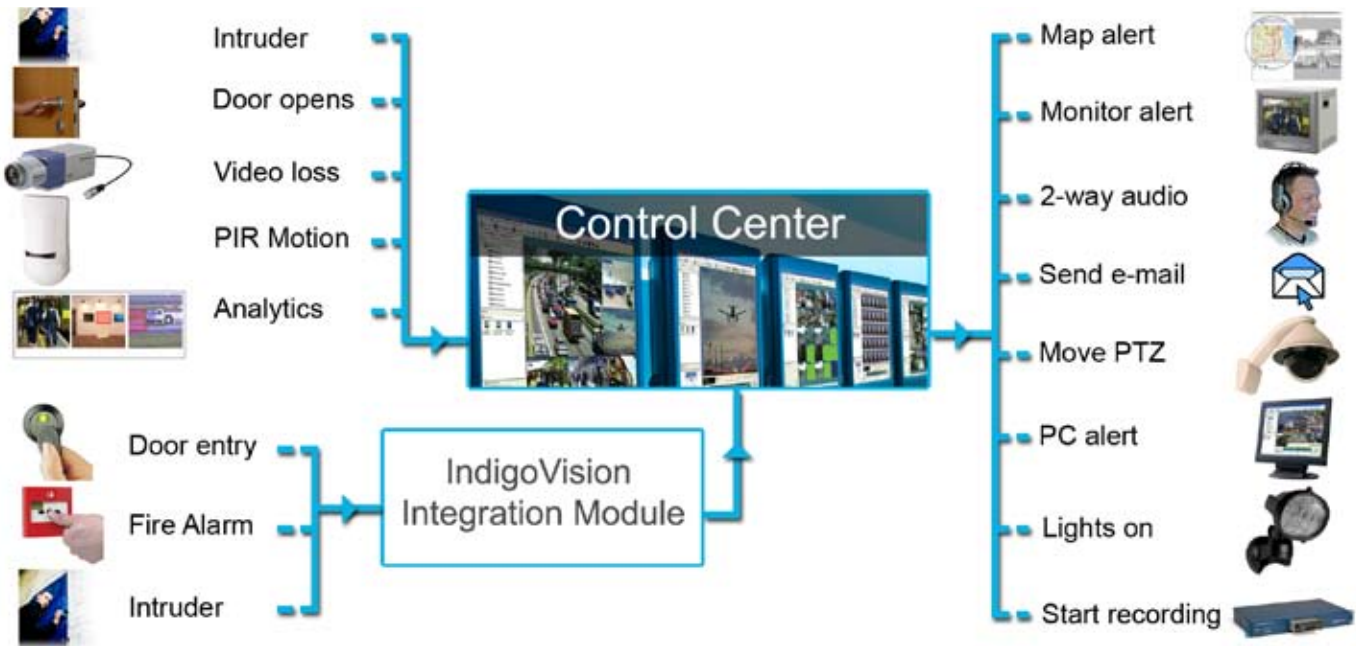
Evidence Handling

Footage from multiple cameras can be exported at the click of a button. Recordings are digitally watermarked to guarantee tamper-proof evidence. Exported data can be played in IndigoVision's Incident Player or standard media players such as Quicktime.



Alarm Management and Integration

Control Center's advanced alarm handling capabilities help improve efficiency and response times when dealing with incidents. There are many advantages to consolidating the alarms at the point where video is viewed as it is the operator interface most used of all the security systems.



Alarm Routing

Administrators can route sets of alarms to specific user groups and/or specific windows, e.g. Alarms from Building 1 always appear in Window 1. Senior Guards see all Alarm Groups in the site but Car Park Guards only see car park Alarm Groups.

Alarm Actions

When an alarm occurs, users can view video from the associated camera, move a PTZ camera to a preset position and acknowledge the alarm. Control Center can use alarms to both start and stop recordings. Live video and audio connections can also be established. Relays can be triggered automatically when an alarm occurs, opening a door when a buzzer is pressed, for example.

Alarm Audit Trail

Users can export reports on alarms containing the alarm type and name, date and time, the name of the user who dealt with the alarm and the text entered by this user when acknowledging it.

Pre-alarm Video

Review the section of video just before an alarm occurred, and automatically protect this footage to ensure that it is not deleted.

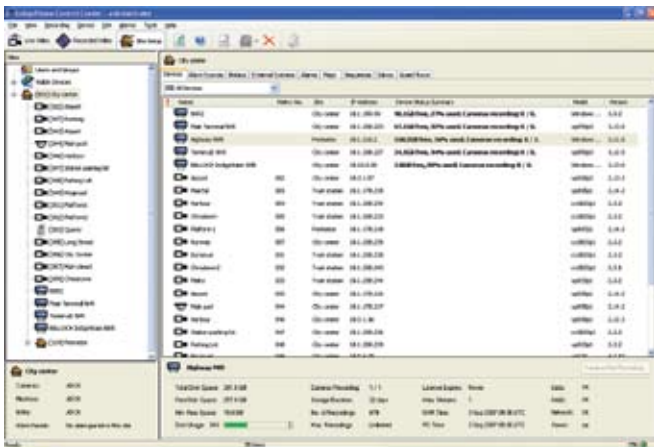
Black Screen Monitoring

Alarm Groups let administrators define where video is displayed from one or more alarm sources. Operators know that if video appears on that window then it is an alarm. As multiple alarms come in, the video can either be Cascaded or Queued on the chosen viewing windows.

Administration

Site Setup

Control Center allows administrators to manage network devices, sites, recordings and the recording schedule. In Control Center, a site can include cameras from many different geographical locations and networks.



User Groups

Control Center enables user accounts to be organized into user groups. Access permissions for cameras and other objects can be applied to user groups so that all users in the group inherit the same permissions, eliminating the need to set up permissions for each user account. User groups can have full administrator, restricted administrator or no administrator rights.

Control Center users can be linked to Windows user accounts. This means that users can have the same login and password for Windows and Control Center.

Alarm Sources

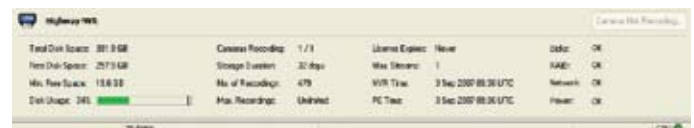
Administrators can specify which users handle which alarms. Other options include the time period when alarm sources are active and the actions to be performed on alarm. Examples of actions include starting a recording, moving a PTZ camera to a preset or activating an output relay. Video recorded at the time of an alarm can also automatically be protected.

Device Discovery

On startup, Control Center automatically detects all IndigoVision devices that are on the same local network as the PC. If required, administrators can also specify scan addresses to discover devices on other networks.

System Diagnostics

Control Center's diagnostic tools allow you to monitor the health of all devices in your site. This means that you can ensure that each device is functioning as expected.



For NVRs, Control Center alerts the user when a disk, redundant power supply or network connection fails; it also displays status information. Control Center displays NVR disk usage information for each camera which has recordings on that NVR. Information such as recording start and stop times, total recording time and total recording size and rate is displayed for each camera and recording.

